

Fietschool

Hello!

March 2024 – Jan Christiaens





The Team



Mobility and seeing mobility with 'new' eyes becomes increasingly important in our day and age ...



Vervoersarmoede komt voor bij alle lagen van de bevolking

Er is niet één oplossing om vervoersarmoede te bestrijden omdat het in alle lagen van de bevolking voorkomt. Dat blijkt uit een onderzoek rond de onderliggende factoren van vervoersarmoede van Mobiel 21 en Netwerk Duurzame Mobiliteit samen met onderzoekers van de Vrije Universiteit Brussel en Universiteit Gent. Opmerkelijk: 1 op de 5 geen kwaliteitsvolle voeding kopen zonder openbaar vervoer.

TTR 20-01-21, 07:52 Laatste update: 20-01-21, 08:13 Bron: Belga



MOBILITEIT EN VERKEER 03/06/2021 - 18:30

Mobiliteit voor iedereen in Sint-Truiden



Solving transport
poverty



Health promotion
and increased well-
being



Increased
autonomy



Relieving
administrative and
logistical burden of
local authorities and
organisers

01. Our cycling process

Skills



Autonomy



Integration



Self-esteem



Happiness



What can we do for you?

Fietsschool 
LEREN
FIETSEN



Bike courses in groups of 20 persons in our Cycling School or on-site

Fietssch+ 
BLIJVEN
FIETSEN



Workshops highway code, defensive biking, repair workshops

Fietssch 
SAMEN
FIETSEN



Buddy-projects (Bike Buddies), combination with language courses, community-building

Fietssch 
FIETSLES
GEVEN



Train-the-trainer for new bike trainers
Consultancy on how to start your own Cycling School

Fietsschool 
MIJN
FIETS



Workshop "Own a Bike", Pilots "Try a bike", Rental bikes in cooperation with social economy

Fietsschx 
IMPACT
METEN



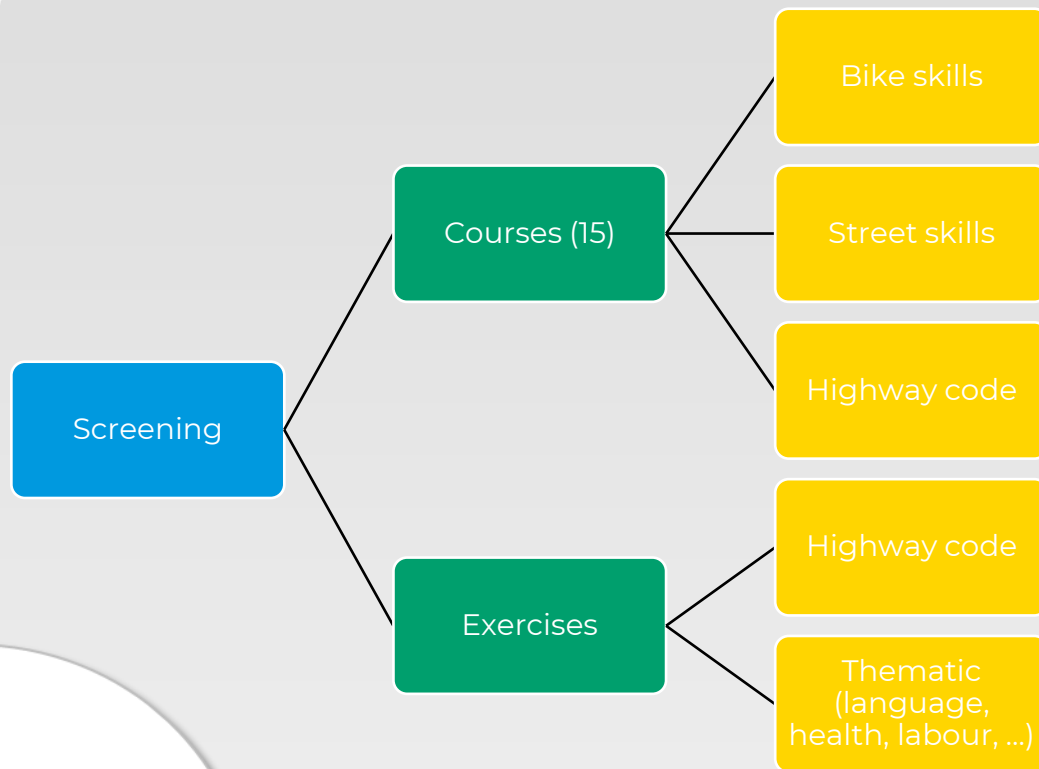
Impact measurement with bespoke methods and impact reports

Zoom 'bike courses'

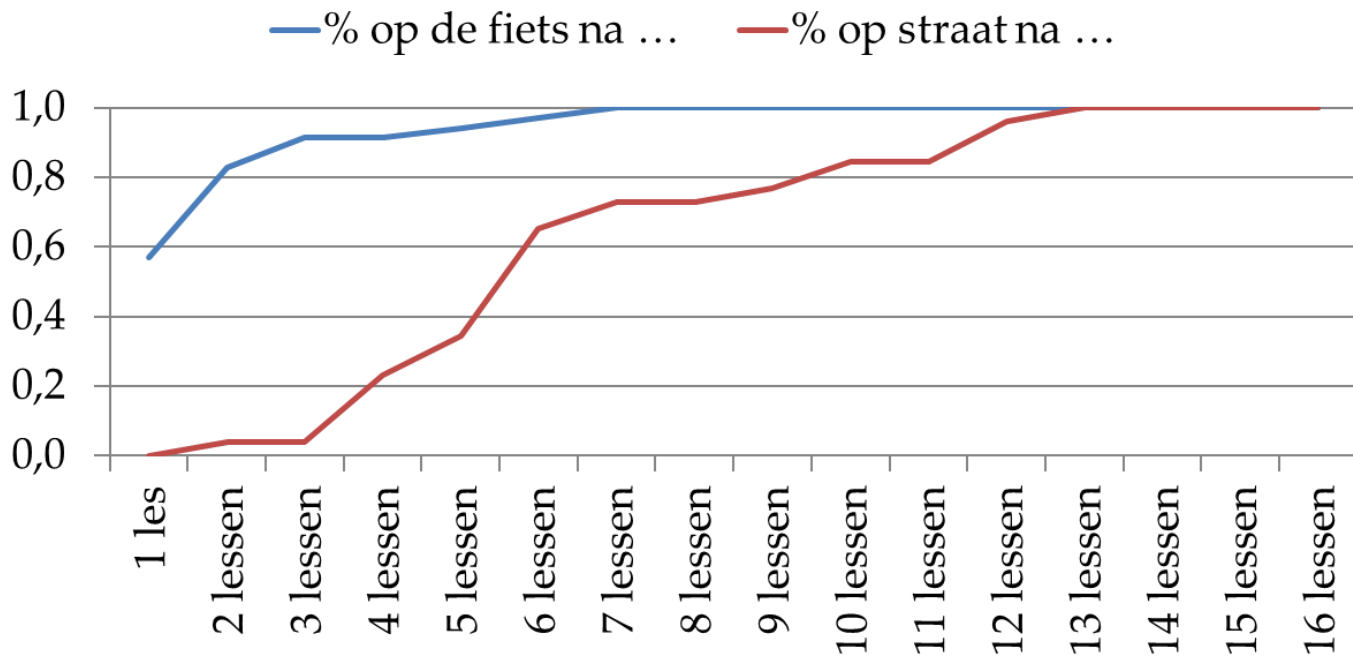
Bike courses in groups of 20 in our Cycling School or on-site

Optional services:

- Train-the-trainer
- Admin support
- Impact reporting
- Workshop bike repair
- Workshop 'own a bike'



Zoom: in the first lesson ~60% is on a bike, after 6 lessons 100%





We offer clear advantages for participants but also for local authorities



Your advantage

Break the cycle of transport poverty

- The bike is the solution for low-income families with reduced mobility
- See also next slide

Relieving administrative and logistical burden

- We take care of recruitment, promotion, course, aftercare, evaluation, Management reporting included.
- You can focus on your core-business

Simple, yet effective, action in bike policy

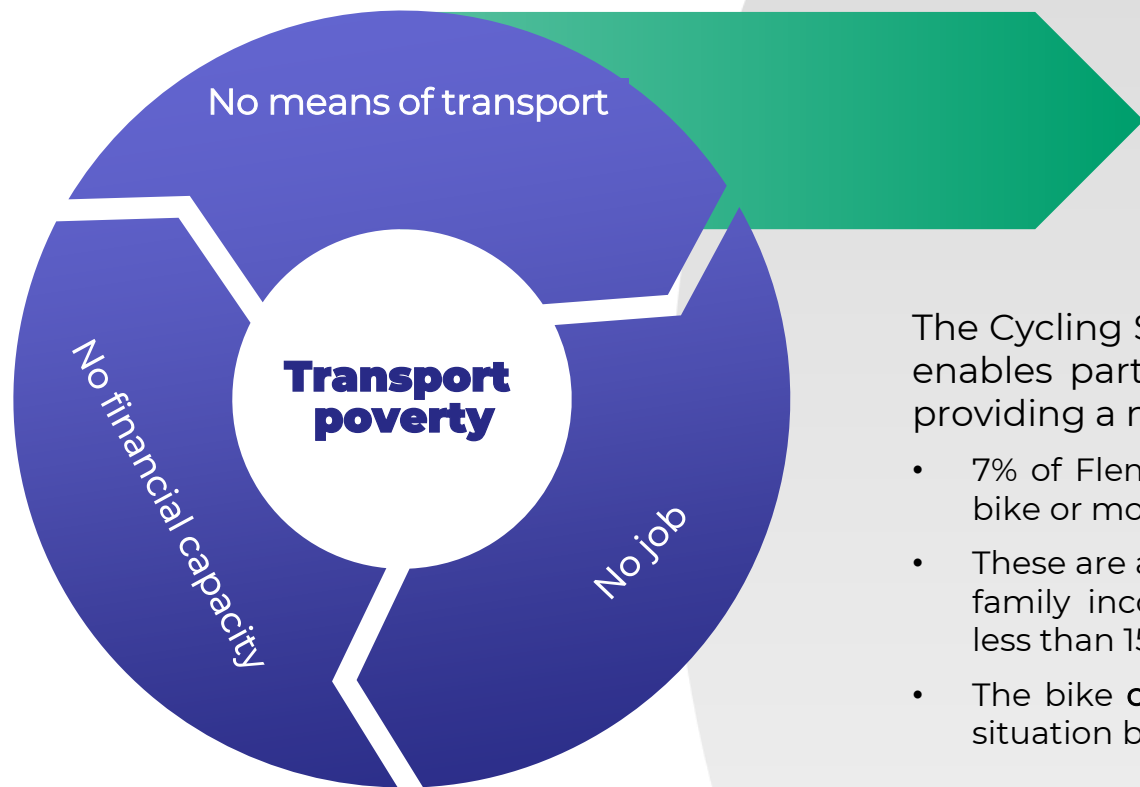
- Bike policy traditionally entails infrastructure and campaigns
- With us, as simple yet effective initiative can be initiated and concluded within a policy period

Concrete action diversity policy

- Bike courses have a demonstrated effect on integration and autonomy of the participants

Greater support for bike policy

- Bike courses are a positive action to promote biking and biking policy



We solve transport poverty...

The Cycling School breaks this vicious circle and enables participants to take part in society by providing a means of transport:

- 7% of Flemish population has no access to a car, bike or motorbike
- These are always families with less than 3000 euro family income. 60% of these families have even less than 1500 euro a month.
- The bike **can take a key position** in their mobility situation because of its **low treshold**

... and decrease unemployment duration significantly

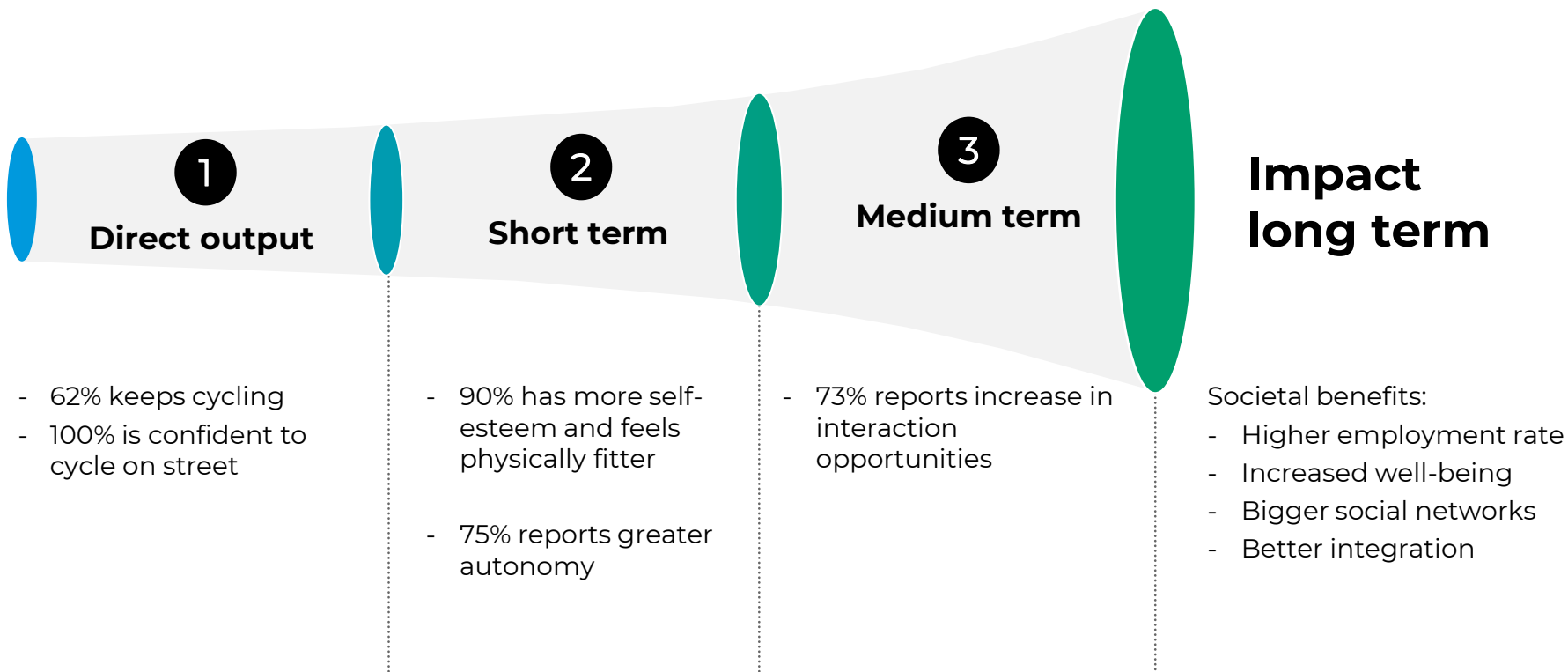
We decrease the duration of unemployment by 4,5 months on average by providing access to bikes:

- Accessibility is the most important determinant for a job (and no longer level of education)
- The bike offers flexibility which public transport is lacking
- One year of unemployment costs 33.443 euro per year/per person



Indicator	Duration of unemployment
No bike	+4,50 months
No car / motorbike	+5,66 months
Limited navigation skills	+7,78 months
Limited motor skills	+4,80 months
Walking aid	+8,98 months
No access to internet	+13,65 months
Only access to public transport	+5,41 months

Demonstrated effects on participants



A woman with curly hair, wearing a dark long-sleeved shirt and patterned shorts, is riding a black bicycle with a basket on the back. She is on a paved path in a park. In the background, there are lush green trees, a wooden fence, and a bench where two people are sitting. The scene is bathed in warm, golden light, suggesting late afternoon or early morning.

For every euro spent on bike courses,
1,60 euro is gained in the same year as
the investment, on health benefits only.

Sources: EFSI, Cahier Fietsberaad / Research by Transport and Mobility
Louvain

Participants can testify

More stories and testimonials on <https://www.deefietschool.be>



Werkgelegenheid

'Leren fietsen heeft mijn productiviteit als huishoudhulp verhoogd. Ik kan nu 4 huizen bezoeken op 1 dag in plaats van 2 als ik te voet ben!'

Gezondheid

'Leren fietsen heeft mijn leven veranderd. Ik voel me veel gezonder nu. Fietsen is voor mij sporten.'



Fietslessen hebben impact

We meten de impact van onze fietslessen nauwgezet, zowel in cijfers als in verhalen. We leren eruit dat kunnen fietsen zoveel meer betekent dan een snelle en fijne manier van verplaatsen. Onze deelnemers vertellen dat ze zich beter voelen, zich meer thuis voelen in hun stad en dat ze zelfstandiger geworden zijn.

Integratie

'Leren fietsen was voor mij een van de gelukkigste momenten in mijn leven. Ik kan mijn kinderen nu naar school brengen met de fiets, zoals andere ouders!'

Eigenwaarde

'Door te leren fietsen besepte ik dat ik nog in staat ben om een nieuwe vaardigheid te leren, ook al ben ik in een ander land en spreek ik de taal nog niet goed!'

Scale-up - partners



Vlaams-Brabant



Limburg



Oost-Vlaanderen



04. Award-winning social business plan



Mobiel 21
@Mobiel21

And so we conclude our amazing IVLP-experience in the USA! Thanks a million to the staff at [@usembrussels](#), [@StateIVLP](#) and [@AshokaBelgium](#) Once more, this proves that [#cyclingunites!](#)

PS: [@BikeLeague](#) See that T-shirt 😊

🗨 Tweet vertalen



07:07 - 7 mrt. 2019

Solve transport
poverty



Health promotion
and increased well-
being



Increased
autonomy



Relieving
administrative and
logistical burden of
local authorities and
organisers